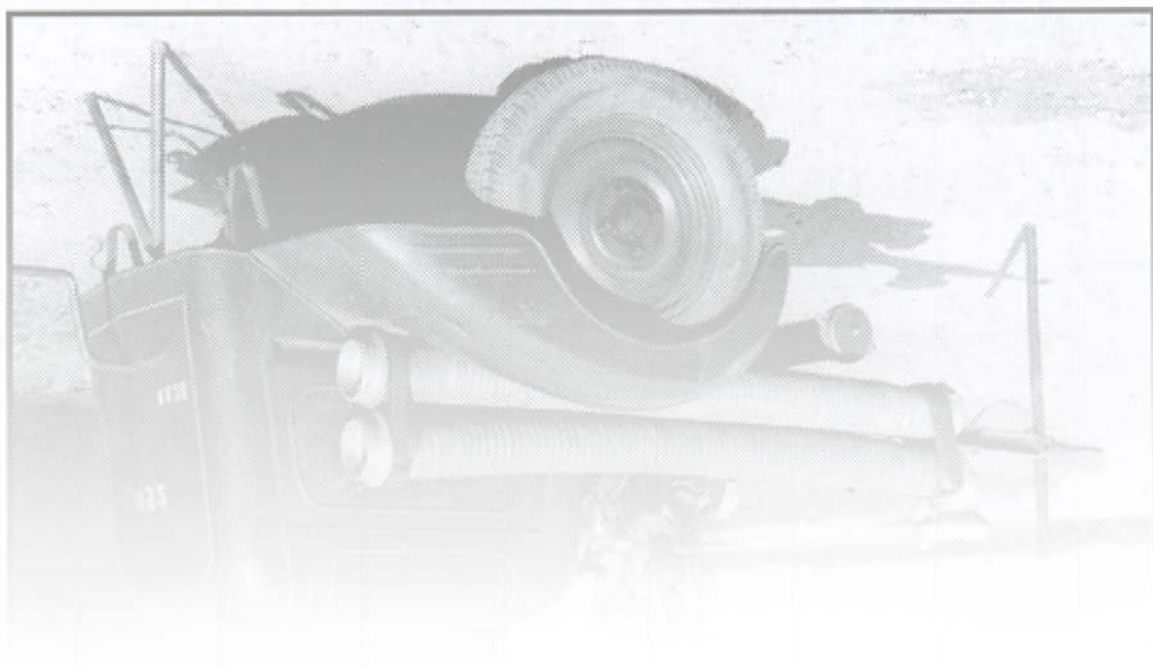


*Sigma DS-16*

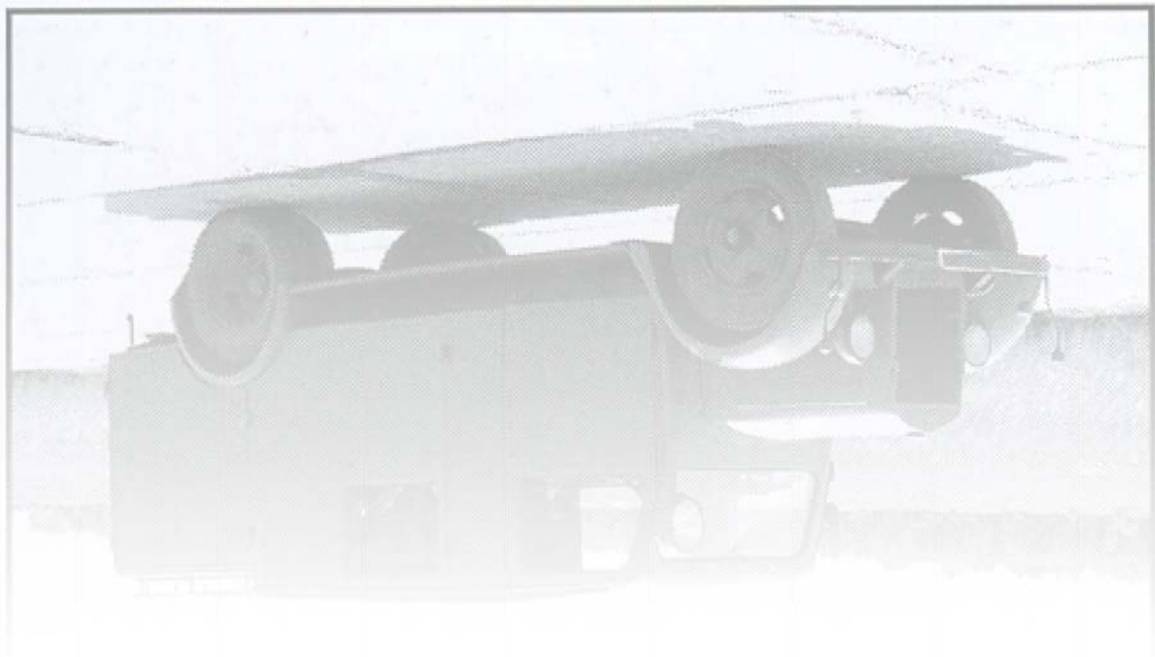
Σίγμα D2-16





*Mercedes-Benz LF 8*

W6106062-B612 LE 8







*Opel- Blitz LF 8 (M-B L 701)*

Οἰκί- Βλίζ ΓΕ 8 (Μ-Β Γ 701)

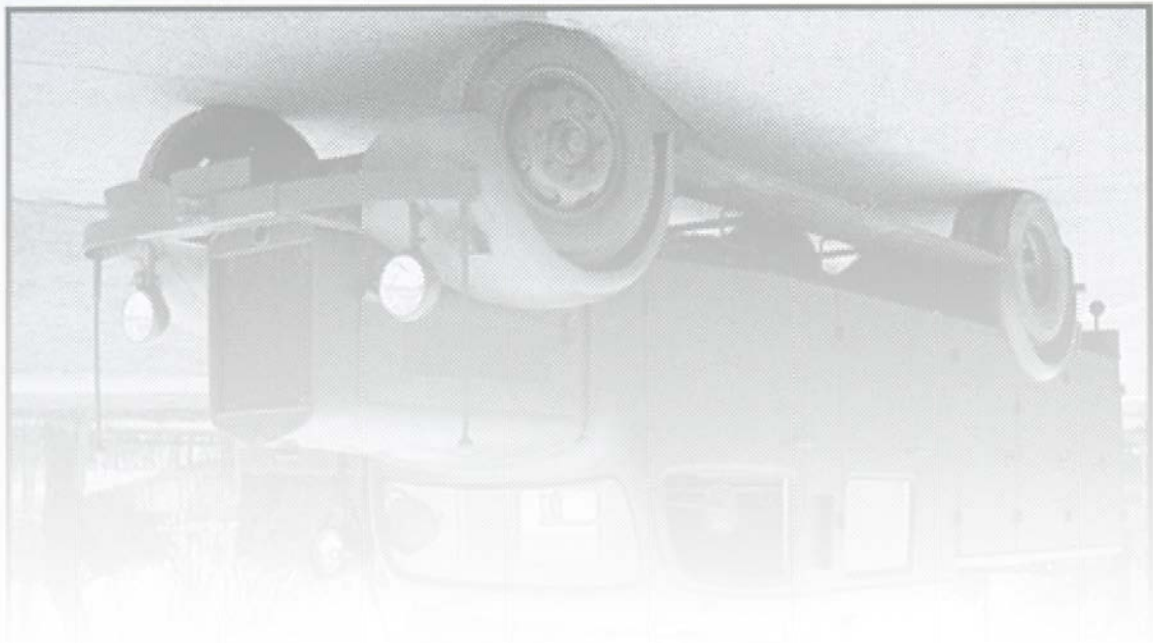






*Mercedes-Benz (L 3000F) TLF-15*

Мерседес-Бенз (Г 3000Е) ТГЕ-12

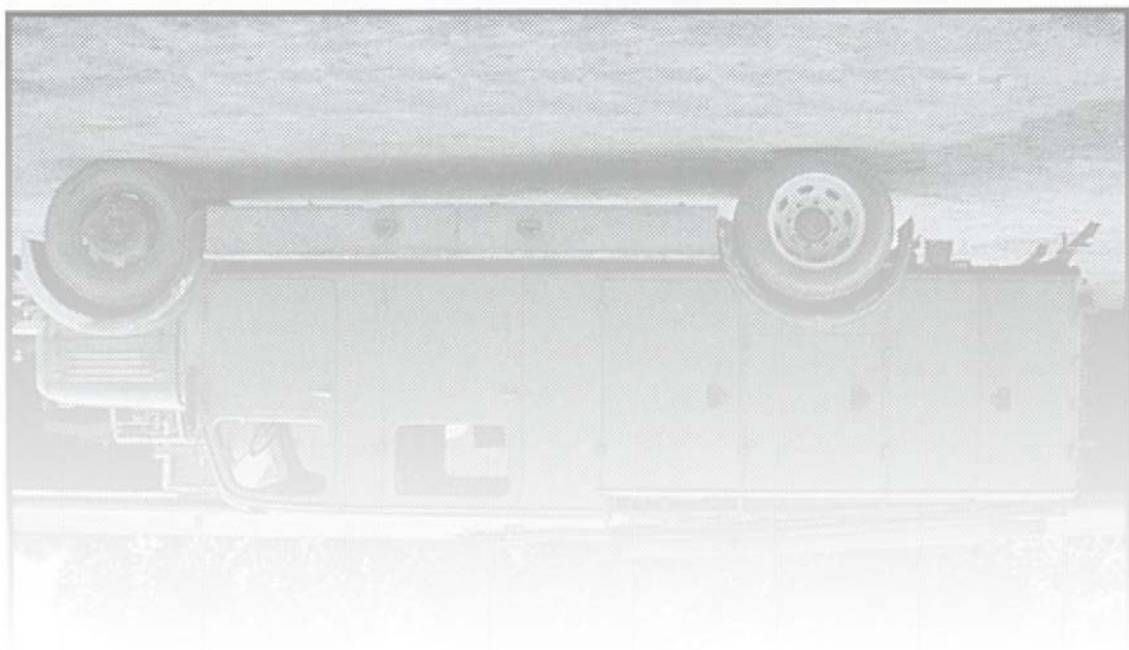






*Magirus-Deutz (S 3000) LF-15*

*Magirus-Deutz (S 3000) LF-12*



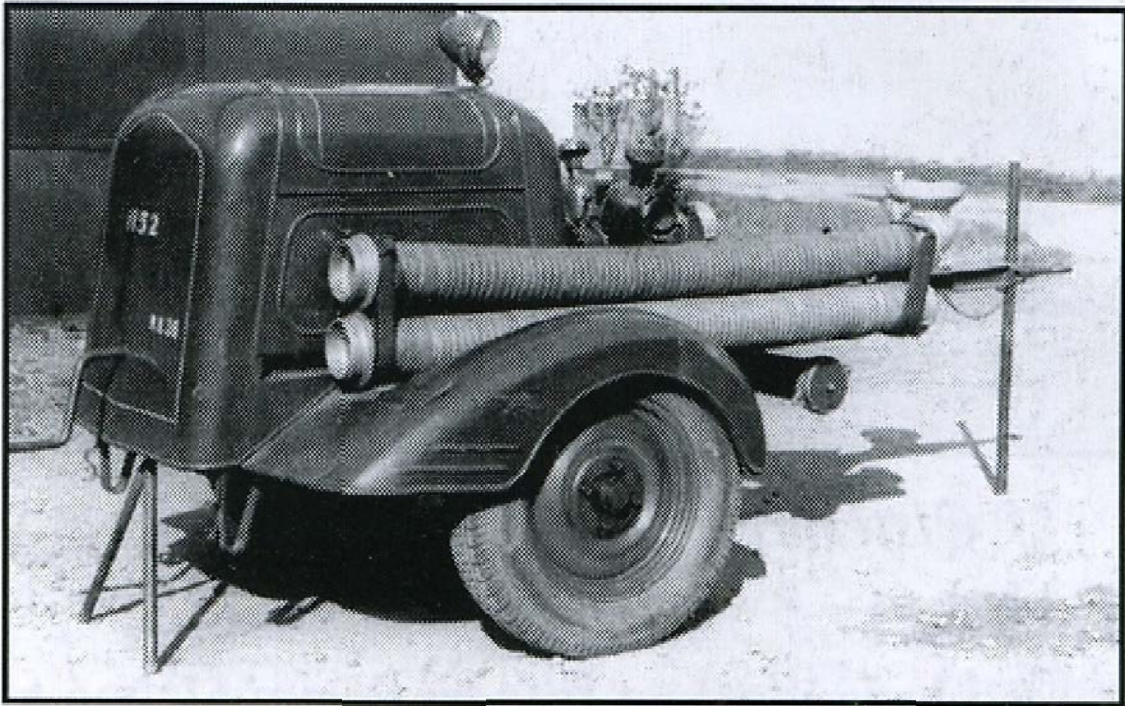




*Opel-Blitz (S 3,6) TLF-15*

Обсѣ-Влѣтз (2 3'6) ЛГЕ-12



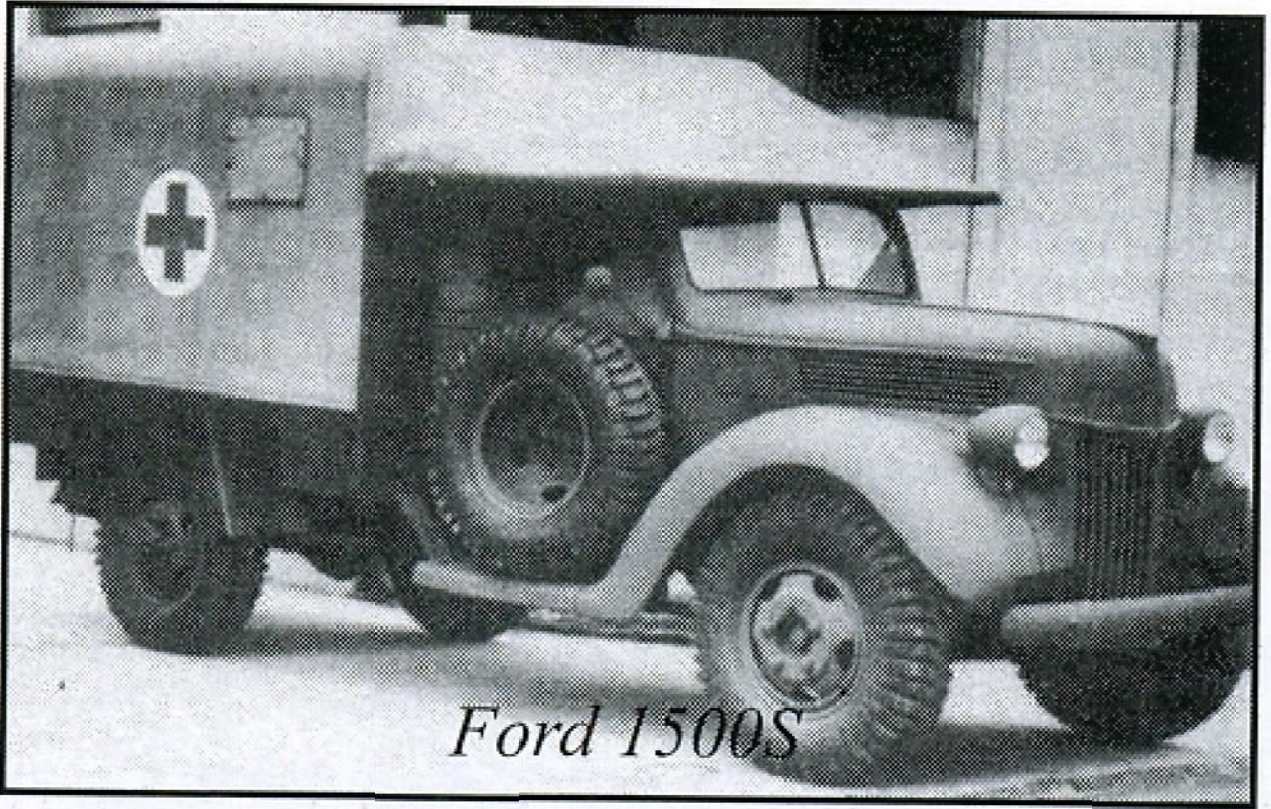


*Sigma DS-16*

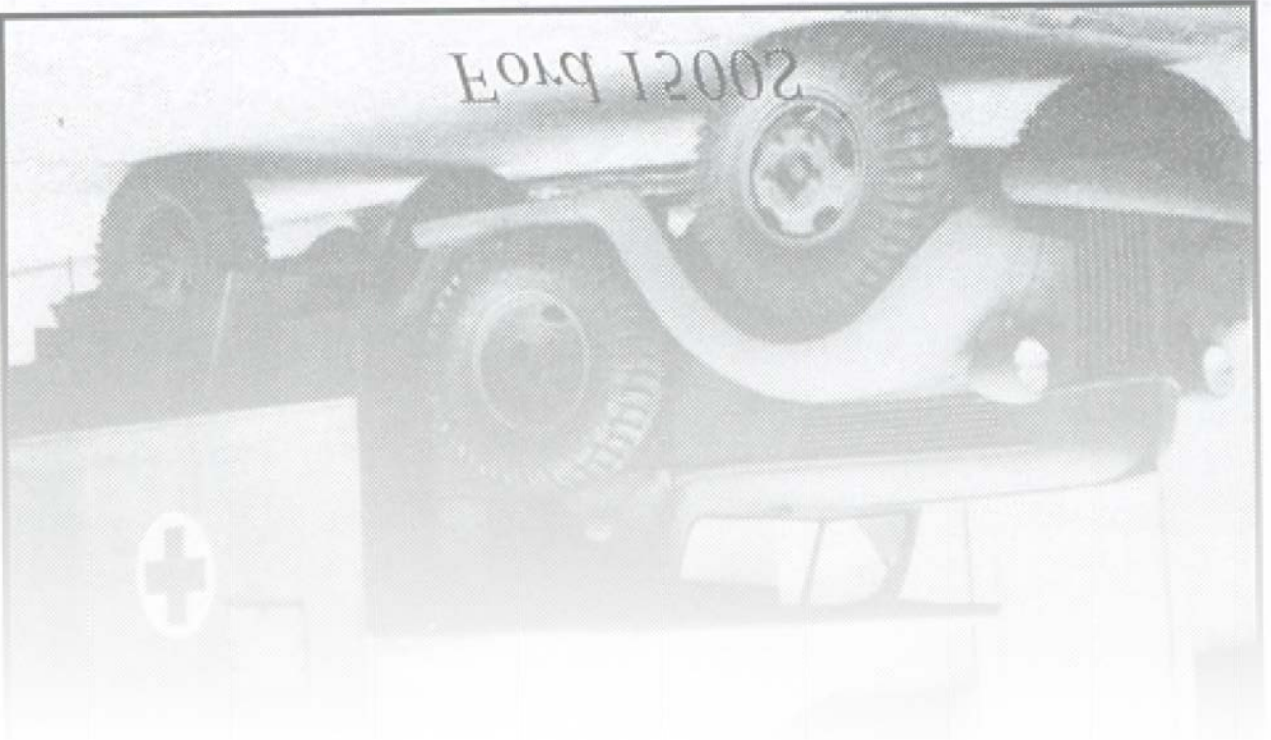
Σίγμα DS-16





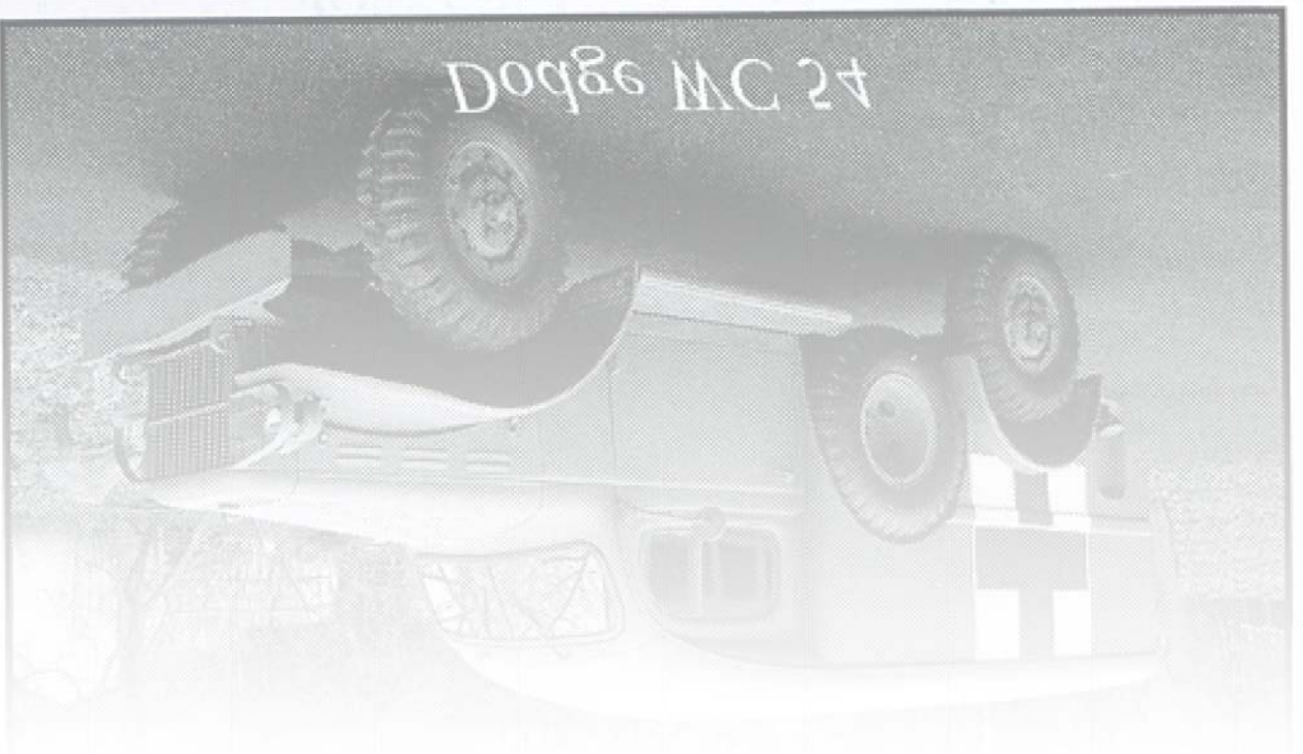


*Ford 1500S*



*EOMQ 12002*









*Opel-Blitz 2,5 – 32 „Sanka“*



*Opel-Blitz 2,5 – 32 „Sanka“*





*Austin K 2*



AUSTIN K 5





*Škoda 256B*

Шкода 256В

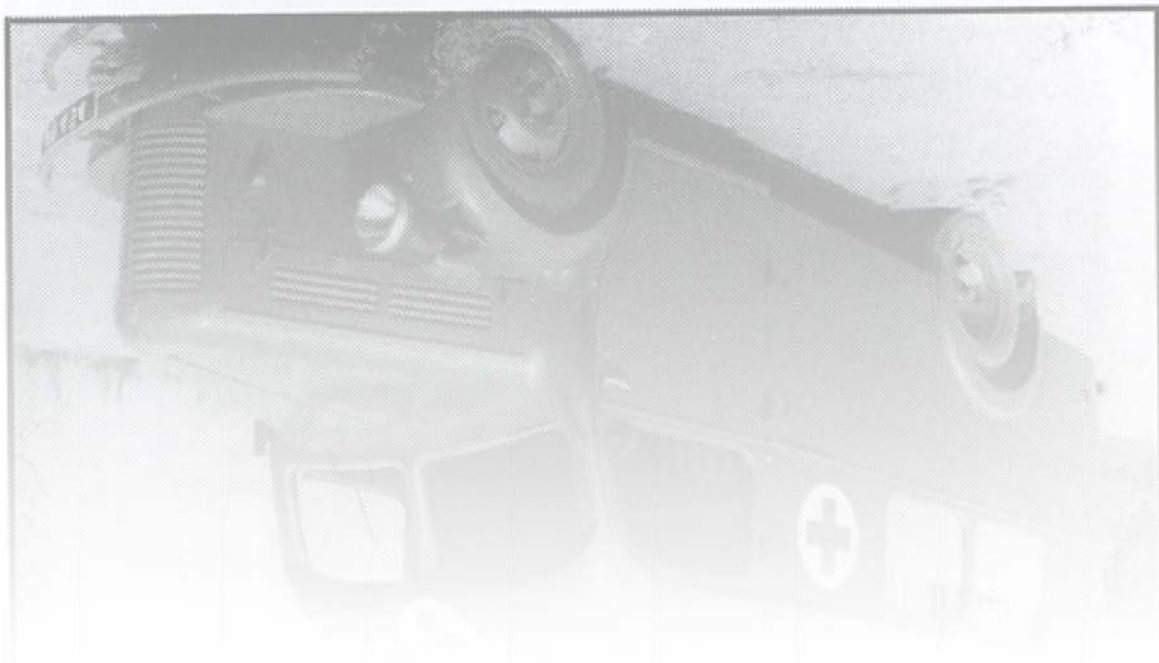






*Praga A150*

Praga A120





*Opel-Blitz (S 3,6) TLF-15*

Объѣ-Влѣз (2 3'6) ЛГЕ-12

