

*Mercedes-Benz 170V (e.č. 20067 u 23. lpr
* 1951)*

** 1021)*

Mercedes-Benz 170V (e.č. 20067 u 23. lpr

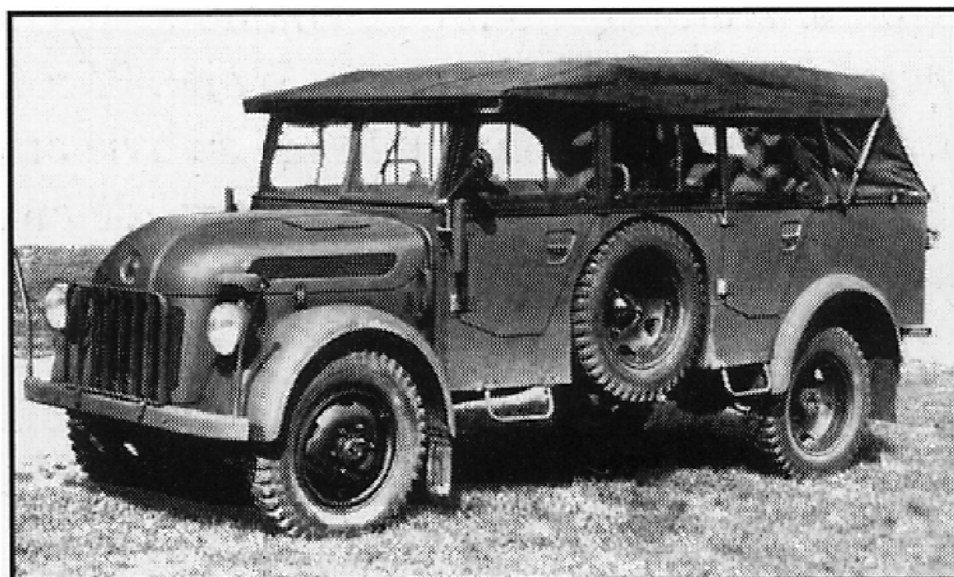




*VW 82/KDF (ev. č. 23518 u 23. lpr * 1951)*

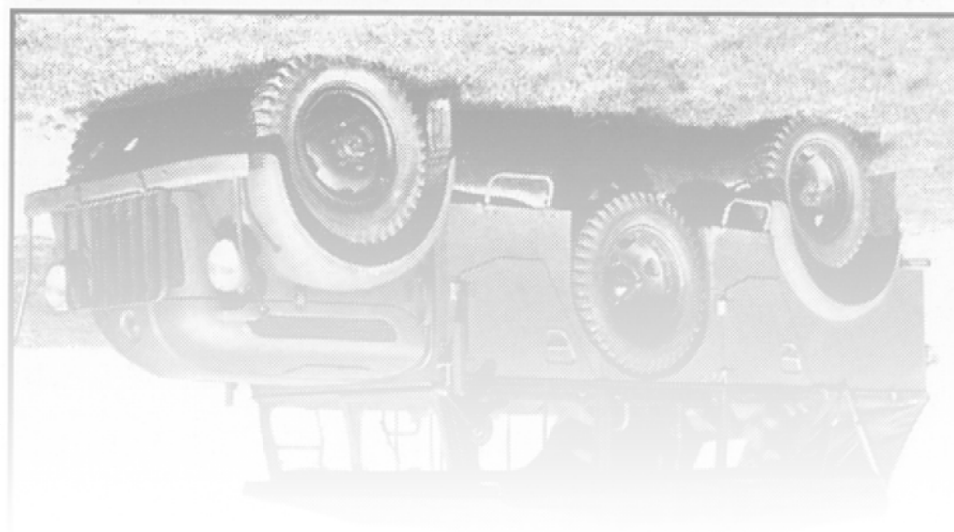
*AM 85/KDE (ev. č. 53218 u 53. lpr * 1951)*

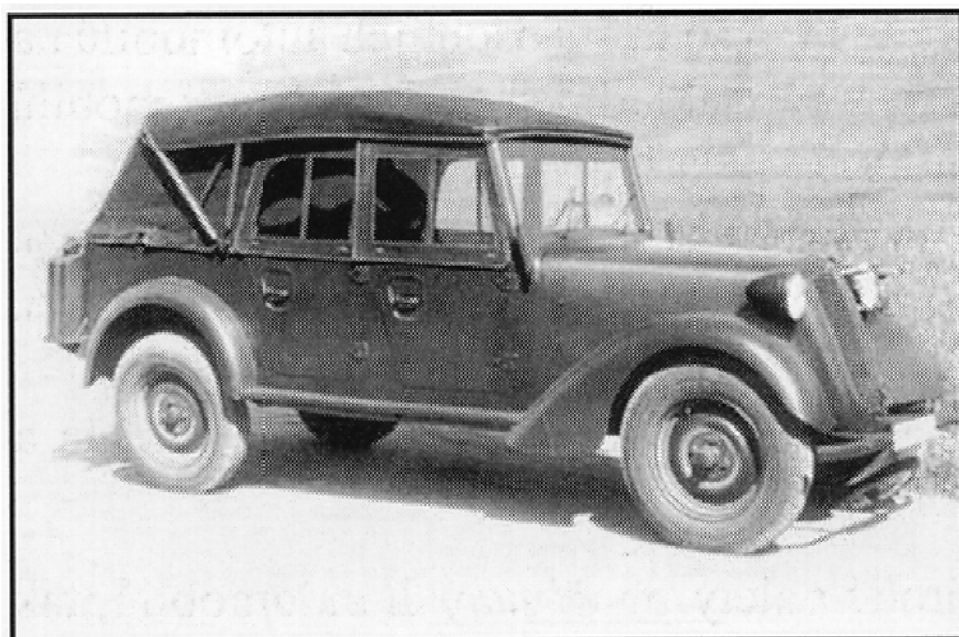




*Steyer 1500 (ev.č.59010 u 23. lpr * 1951)*

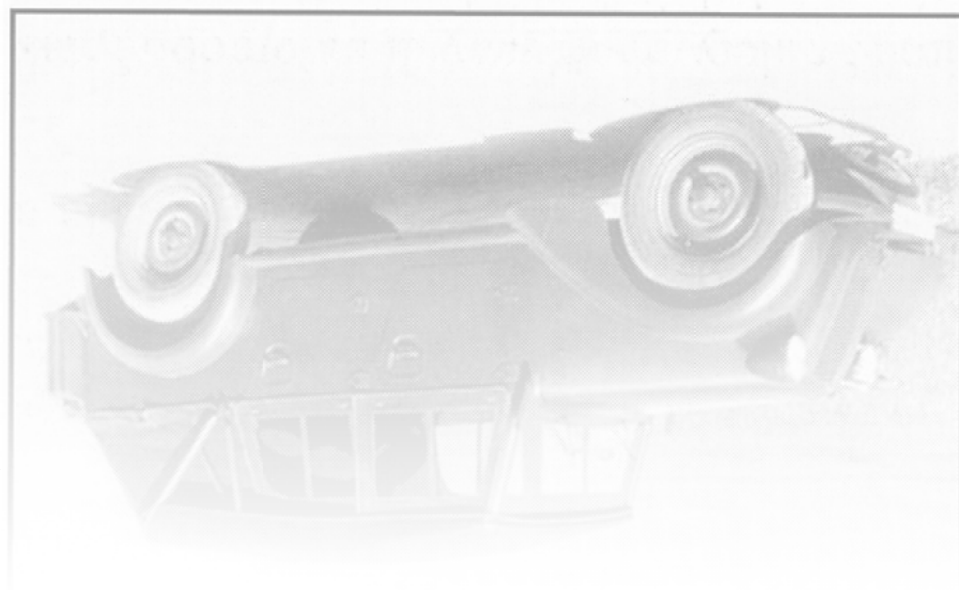
Στεγερ 1200 (επ.č.28010 η 23. lpr * 1951)





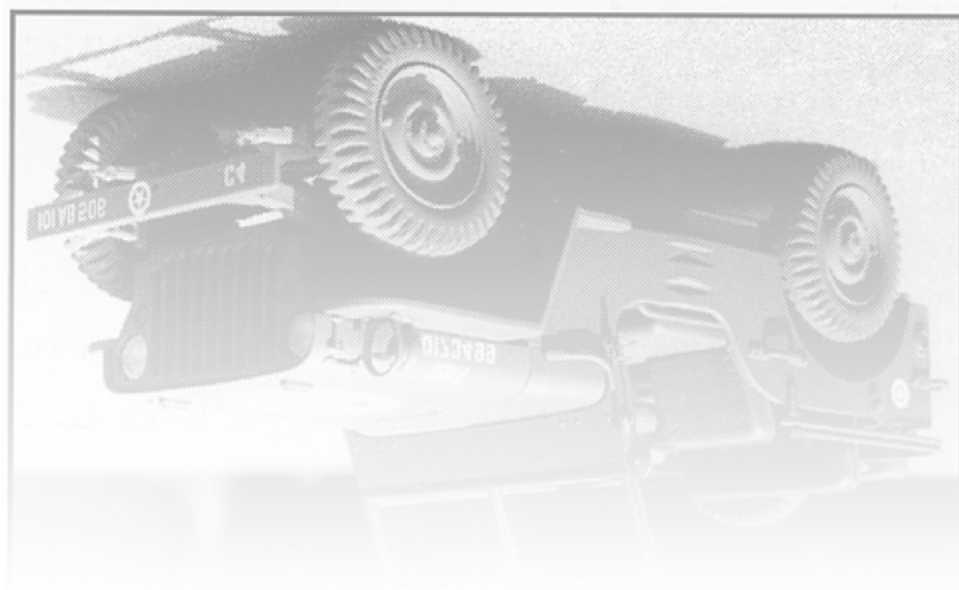
*Tatra 57K (ev. č. 21709 u 23. lpr * 1951)*

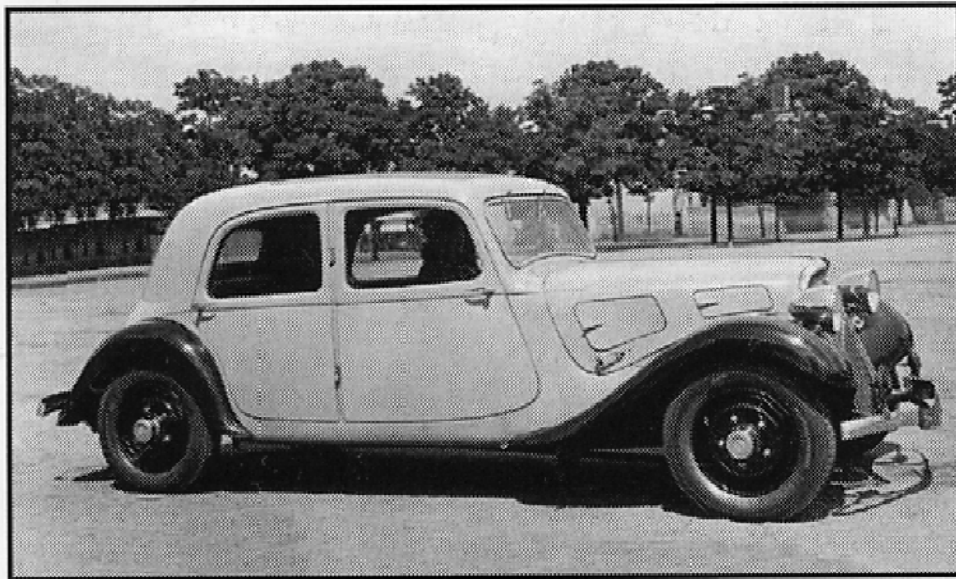
*Tatra 21K (ev. č. 51109 u 23. lpr * 1951)*





*Jeep Willys MB (ev.č. 22201 u 23. lpr*1952)*
*166b M.I.I.P.2 WB (6N.C. 55501 u 53. lpr.*1825)*



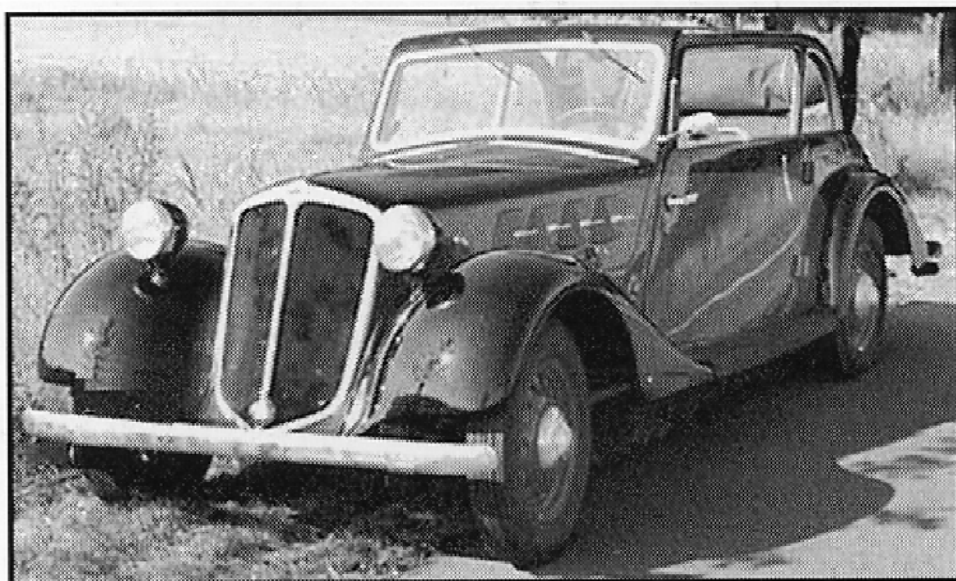


*Citroen 11 CV (e. č. 21655 u 23. lpr *
1951)*

1021)

CITROEN 11 CV (e. č. 21022 u 23. lpr. *



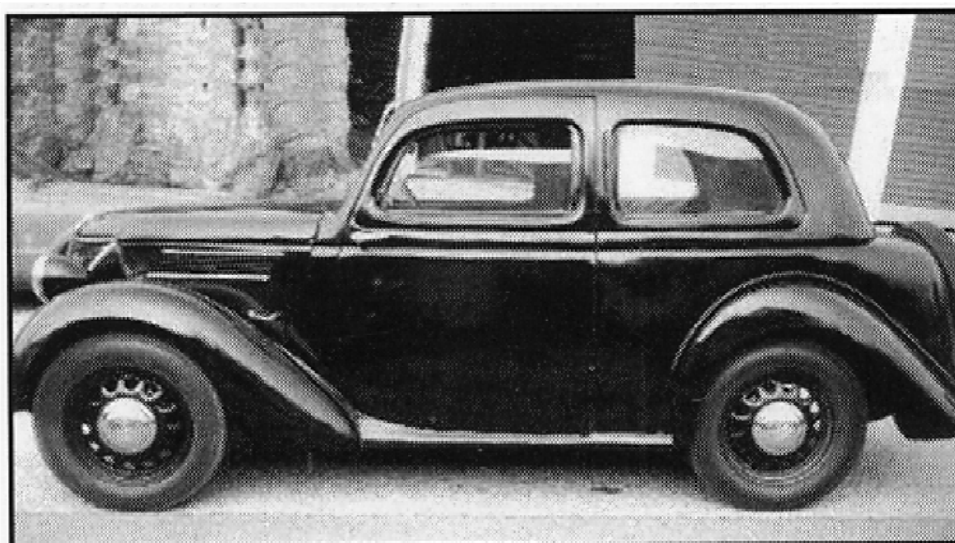


*Borgward Hansa 1100 (e. č. 21692 u 23.
lpr * 1951)*

lbr. * 1021)

BORGWARD HANSA 1100 (e. č. 21692 u 23.





*Ford Eifel (ev. č. 21737 u 23. lpr * 1951)*

FOKD EİFEL (EV. Č. 21737 U 23. LPR * 1951)

